

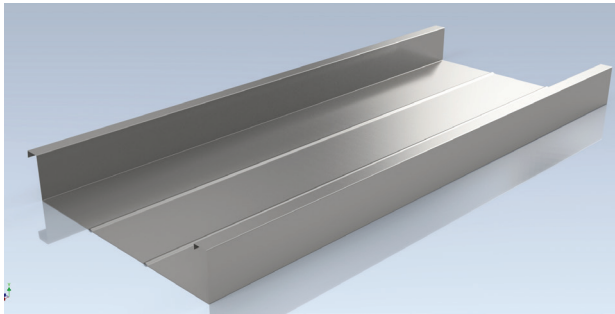


THE ULTIMATE ROOF PANEL: BETCO 316

The BETCO 316 combines design flexibility with great looks so you can explore an unlimited number of building combinations. Its 3" rib creates a distinctive, true shadow look as well as providing the unsurpassed strength that make the 316 well suited for any application roofing, mansard, fascia, soffit.

ENGINEERING

The BETCO 316 is engineered to be structural yet architectural in nature. BETCO's state-of-the-art roll-forming process puts less stress on each panel. Two secondary tension ribs remove any oil canning or wavy surface effects so you are assured a smooth, level surface necessary for the optimum look. Unlike most panels on the market, a costly substructure and additional labor are not needed.

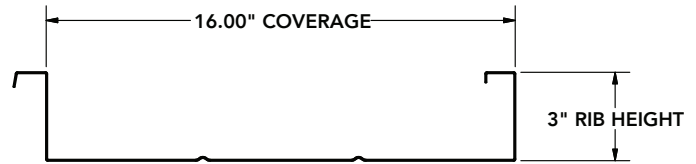


MATERIAL

Designed for quick and easy installation, the BETCO 316 is virtually maintenance free. The 316 is constructed of 50,000 psi, 25 year warranty Galvalume steel and is a standing seam profile. It's ideally suited for almost any building application - roofing, mansard, storefront or fascia. Plus, BETCO provides a wide variety of flashing, trim and framing systems suited for all applications.

PERFORMANCE

When it comes to performance the BETCO 316 is true to its name. The 316 has rain carrying capacity superior to most other architectural panels and requires only a 1/4" slope. Our panels are 100% inspected, individually hand packed and backed by a 25 year warranty.



SECTION PROPERTIES						ALLOWABLE UNIFORM LOAD - PSF				
GA	FY (KSI)	WT. (PSF)	PANEL TOP IN COMPRESSION		PANEL BOTTOM IN COMPRESSION		SPAN (FT)			
							LIVE LOAD		WIND UPLIFT	
			Lx in 4/ft	Sx in 3/ft	Lx in 4/ft	Sx in 3/ft	5'	10'	5'	10'
24	50	1.461	0.4013	0.1635	0.2228	0.1391	111.4	31.1	124.8	36

NOTES:

1. All calculations for properties of panels are calculated in accordance with the North American Specification for the Design of Cold-Formed Steel Structural Members-2016 Edition.
2. Values shown as allowable loads are based on panel covering 3 equal spans. Multiply load values by 0.85 for 2 span condition. Deduct panel weight for calculating superimposed uniform load. Values denote allowable loads limited by bending shear or deflection ratio of 1/180 of span.
3. Minimum steel yield strength is 50,000 psi conforming to ASYM A792 Galvalume SS Gr.50B.
4. Minimum bearing length of 2'.

BETCO 316 PANEL SUGGESTED SPECIFICATIONS

- Scope of Work: Furnish and stall the BETCO 316 Panel (Roofing, Siding, or Fascia) as manufactured by BETCO, Inc., 228 Commerce Blvd, Statesville, NC 28625, (704) 872-2999. The contractor shall furnish all materials, labor, and equipment to execute the work in a timely manner in accordance with plans and specifications.
- Materials and Coatings: Base metal shall be (24) gauge steel, high strength 25 year warranty Galvalume produced to ASTM A792-Structural Steel, Grade 50.
- Finishes: The finish is either plain galvalume or high durability finish with 40 year warranty (crack, peel, and adhesion).
- Panels and Flashings: Panels shall be 16" wide, 3" deep, and roll formed in continuous lengths. Horizontal lap joints are not acceptable. Panel surface texture shall be smooth.
- Installation: Panels shall be installed over a properly aligned substructure by means of the Positive Fastening method. All flashings and panel joints requiring caulking shall be applied neatly and to prevent water penetration.