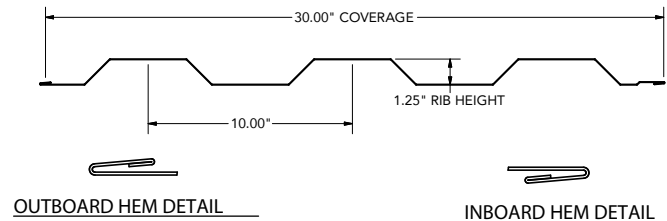
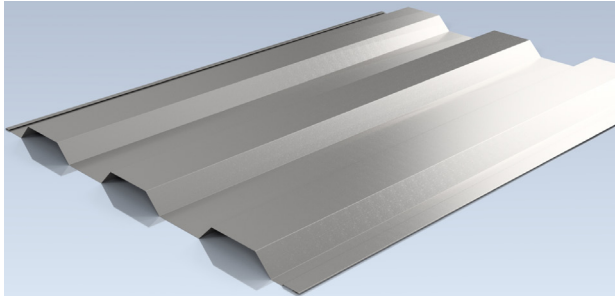




## THE HIGH SECURITY: BETCO 230 PANEL



### DURABLE, GOOD LOOKING and PRICED TO SELL

BETCO's large volume purchases and technologically advanced processing techniques can result in significant savings for you over other wall and partition systems. Plus, the 230's thirty inch span covers 50% more area than other wall and partition panels saving you even more in labor and material costs.

The **BETCO 230** is manufactured from Galvalume® Steel, a material that's known for its great looks and unequalled quality as panel material. Each panel is 100% inspected and individually hand packed.

### DESIGNED FOR HIGH SECURITY

Specifically designed for one person handling, BETCO's unique interlocking feature makes the 230 a High Security panel. It is simple to install even on the most uneven floors, and there's no need for field cutting or on site panel adjustments, if your walls are in 5'-0" increments. The panels fit neatly together without raw edges or lap joints. The 230 is virtually maintenance free and requires fewer fasteners than other panels so it's a snap to demount and reinstall.

### ENGINEERING

The **BETCO 230** is engineered for an unsurpassed "strength to weight" ratio and, unlike most panels on the market, requires no costly substructure. BETCO's state-of-the-art roll forming process puts less stress on each panel. The 1 1/4" deep rib sections provide the unsurpassed wall strength that makes the 230 perfect for a wide range of applications from partitions and walls to hallways and corridors.

### MATERIAL

Galvalume® Steel (20 year warranty) or prepainted in Sterling White or Brilliant White Glossy with a 40 year warranty (crack, peel and adhesion).

The **BETCO 230** is offered with complete accessories, including top and bottom channels, vertical and structural angles. Plus, BETCO provides a wide variety of flashing, trim and framing systems suited for all applications.

#### FEATURES

- High Security
- Structural strength
- 1 1/4 inch deep rib sections
- No costly substructure
- 30" wide panel
- Unique interlocking feature: no lap joints
- 28 gauge ASTM A792 Galvalume® AZ35
- Standard lengths 5'-0" to 25'-0"
- Vertical application eliminating dust

#### PANEL APPLICATIONS

- Wall
- Partition
- Corridor
- Hallway
- Liner